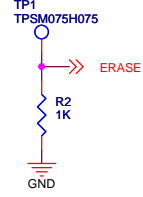
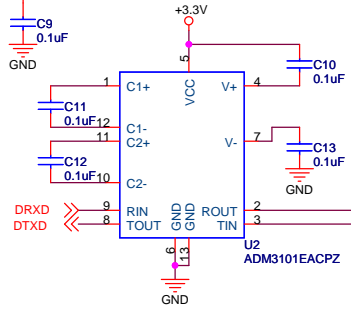


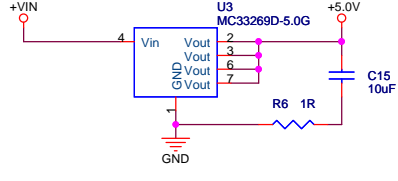
Short TP1 to 3.3V or 5.0V during startup to replace bootloader



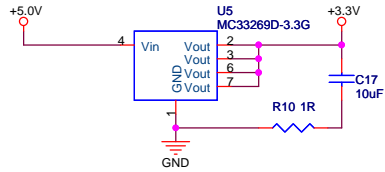
**RS232 Level Converter**



**+7.5V to +12V DC (9V Preferred) to 5V LDO Converter**



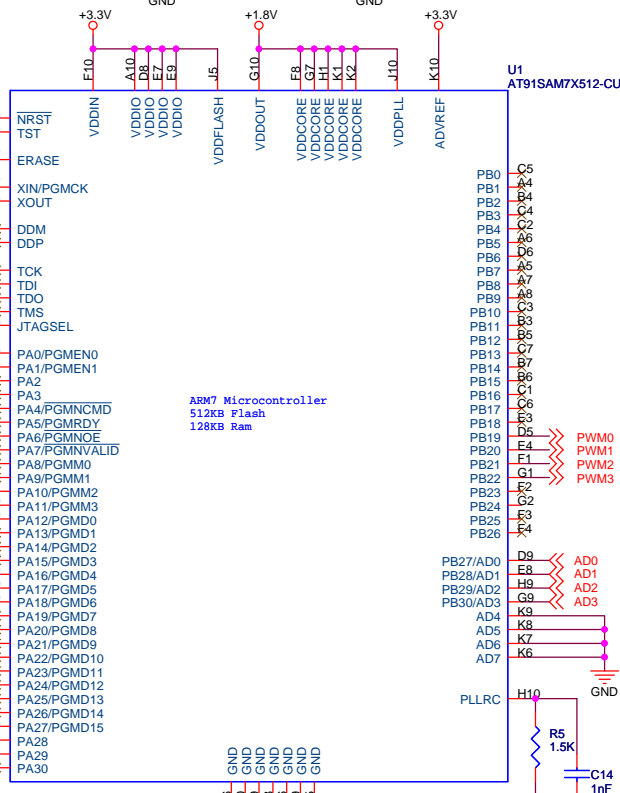
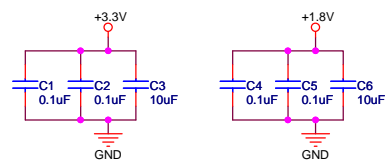
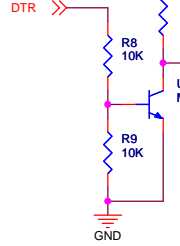
**5V to 3.3V LDO Converter**



**2 wire bus**

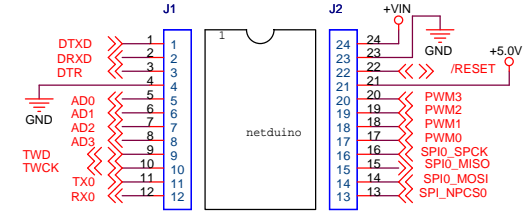


**Level Translation**  
From: -15V to +15V  
To: +3V to 0V



ARM7 Microcontroller  
512KB Flash  
128KB Ram

Dual in line edge pins:  
Cutt pin portion, beyond standoff, to 0.125" (3.2 mm)



DIL100IMP12M-T-V-E\_01-12 DIL100IMP12M-T-V-E\_13-24

Pin 21: If +VIN providing power, pin 21 is +5.0V regulated output. If +VIN unused, pin 21 is +5.0V regulated input.

Pin 23: Input Power GND

Pin 24: +VIN Input (+7.5 to +12 VDC, 9V Preferred)

Title		
Netduino Mini		
Size	Document Number	Rev
B	CW0002	A
Date:	Wednesday, October 20, 2010	Sheet 1 of 1